

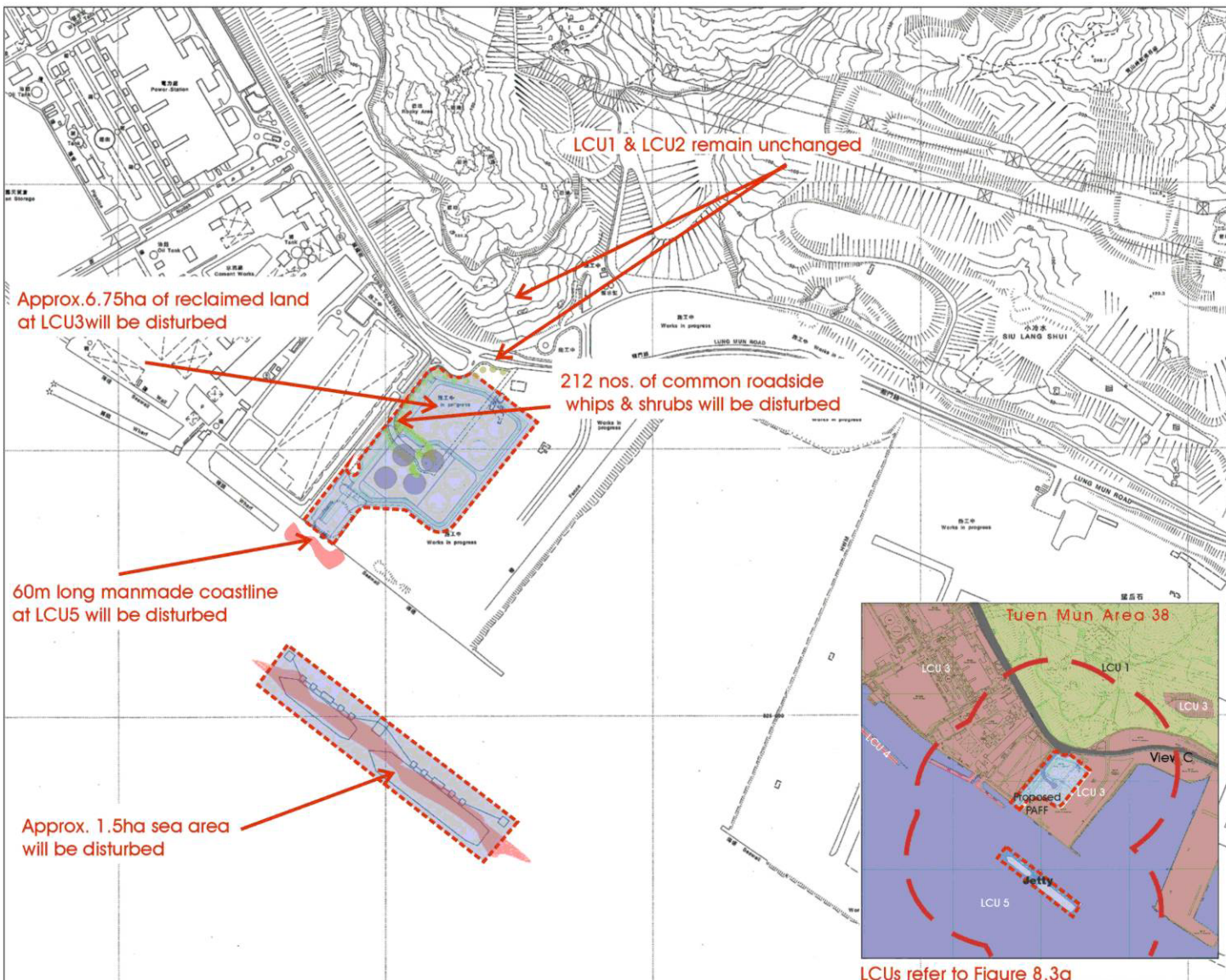
Refer to Table 8.9a & b in the LVIA

Summary of Disturbance to Landscape Character Units

Description	Disturbances
LCU 1 Woodland, grassland and shrubland	Nil
LCU 2 Transport Corridor	Nil
LCU 3 Industrial/Utility	Approx. 6.75 ha. of land zoned for Industrial Uses
LCU 4 Pier	Nil
LCU 5 Waterfront	Approx. 60m length of disturbed waterfront.

Summary of Disturbance to Landscape Elements






Type of Landscape Element	Total area within the Study Area of the PAFF	Area in Interaction with the PAFF
Secondary Woodland	Approx. 14ha.	Nil
Existing Road side whips	Approx. 6ha (1000 nos. of roadside trees/whips)	0.25ha (212 nos. of roadside whips)
Cut Slope	Approx. 5ha.	Nil
Sea	Approx. 230ha.	Approx. 1.5ha. sea area
Vehicular Corridor	Approx. 19ha	375m long existing access road.
Industrial Built-up area	Approx. 42ha.	Approx. 6.75ha. reclaimed land
Manmade Coastline	Approx. 2700m length	60m length



LCUs refer to Figure 8.3a

Landscape impacts are mainly result from the construction of PAFF at Phase 2005 and expansion of the fuel tank farm from 2010 to 2040. Summary of Landscape impacts also refer to Table 8.10.

Legend

-  Modification/Disturbance of Existing Waterfrontage
-  Extent of the PAFF
-  Existing Road Side Trees will be affected at Phase 2005 Construction
-  Proposed Initial Phase 2005
-  group of additional fuel tanks will be built on demand from 2010 to 2040